



1

WHAT DO YOU THINK IT IS?

Observe

Connect

Speculate

| | | |
|-------------|-------------------|---------------------------------------|
| Made from? | Special markings? | Colors & textures? |
| Looks like? | Reminds me of? | Sounds like, feels like, smells like? |
| Used for? | Used by? | Made when? |

2

WHAT DO YOU THINK IT IS?

Observe

Connect

Speculate

| | | |
|-------------|-------------------|---------------------------------------|
| Made from? | Special markings? | Colors & textures? |
| Looks like? | Reminds me of? | Sounds like, feels like, smells like? |
| Used for? | Used by? | Made when? |

3

WHAT DO YOU THINK IT IS?

Observe

Connect

Speculate

| | | |
|-------------|-------------------|---------------------------------------|
| Made from? | Special markings? | Colors & textures? |
| Looks like? | Reminds me of? | Sounds like, feels like, smells like? |
| Used for? | Used by? | Made when? |

Analyze an Artifact

Part 2

4

WHAT DO YOU THINK IT IS?

Observe

Connect

Speculate

| | | |
|-------------|-------------------|---------------------------------------|
| Made from? | Special markings? | Colors & textures? |
| Looks like? | Reminds me of? | Sounds like, feels like, smells like? |
| Used for? | Used by? | Made when? |

5

WHAT DO YOU THINK IT IS?

Observe

Connect

Speculate

| | | |
|-------------|-------------------|---------------------------------------|
| Made from? | Special markings? | Colors & textures? |
| Looks like? | Reminds me of? | Sounds like, feels like, smells like? |
| Used for? | Used by? | Made when? |

6

WHAT DO YOU THINK IT IS?

Observe

Connect

Speculate

| | | |
|-------------|-------------------|---------------------------------------|
| Made from? | Special markings? | Colors & textures? |
| Looks like? | Reminds me of? | Sounds like, feels like, smells like? |
| Used for? | Used by? | Made when? |



IKE ARTIFACT ANALYSIS CHOICE BOARD



Diary Entry

Imagine you are Dwight Eisenhower from the early 1900's. Write a diary entry describing your day.

Include **three** of the artifacts you learned about from Ike-A Barefoot Boy from Abilene.

How did the artifacts help you? What challenges did you face?

Then and Now Comparison

Choose three artifacts from Ike-A Barefoot Boy from Abilene and think about how the artifact was used in the past and what we use today to do the same task.

1. **Artifact from the Past**
2. **Modern Equivalent**
3. **How Are They Different**

Create a Museum Exhibit

Choose two artifacts from Ike-A Barefoot Boy from Abilene and design museum display cards for your artifacts. Include the following information:

- **Name of the artifact**
- **What it was used for**
- **Who used it**
- **An interesting fact about it.**
- **A small drawing of the artifact**

Letter to the Future

Write a letter to someone 100 years from now explaining an artifact from Ike-A Barefoot Boy from Abilene. What do you think they would find surprising about it? What do you think that person would use instead?

Dear Future Historian,
I am writing to tell you about an artifact from the early 1900's called a _____. It was used for _____. You might be surprised that back then, people didn't have _____!

Then and Now Skit

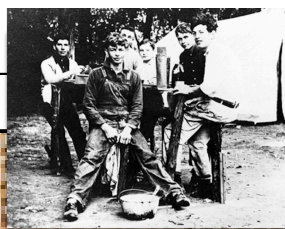
Choose an artifact from Ike-A Barefoot Boy from Abilene and create a short skit with a partner or small group showing how the artifact was used in the past and what people use today instead. Plan your skit below:

Artifact:

Past Scene:

Modern Scene:

Perform your skit for the class!



Debate: Was Life Easier or Harder?

Do you think life for Ike in the early 1900's was easier or harder than today? Use evidence from Ike-A Barefoot Boy from Abilene artifacts to support your opinion. Write your argument below:

I believe life was (easier/harder) in the early 1900's because _____.

Reflection Question: What did you learn about life in the past by studying this artifact?

