



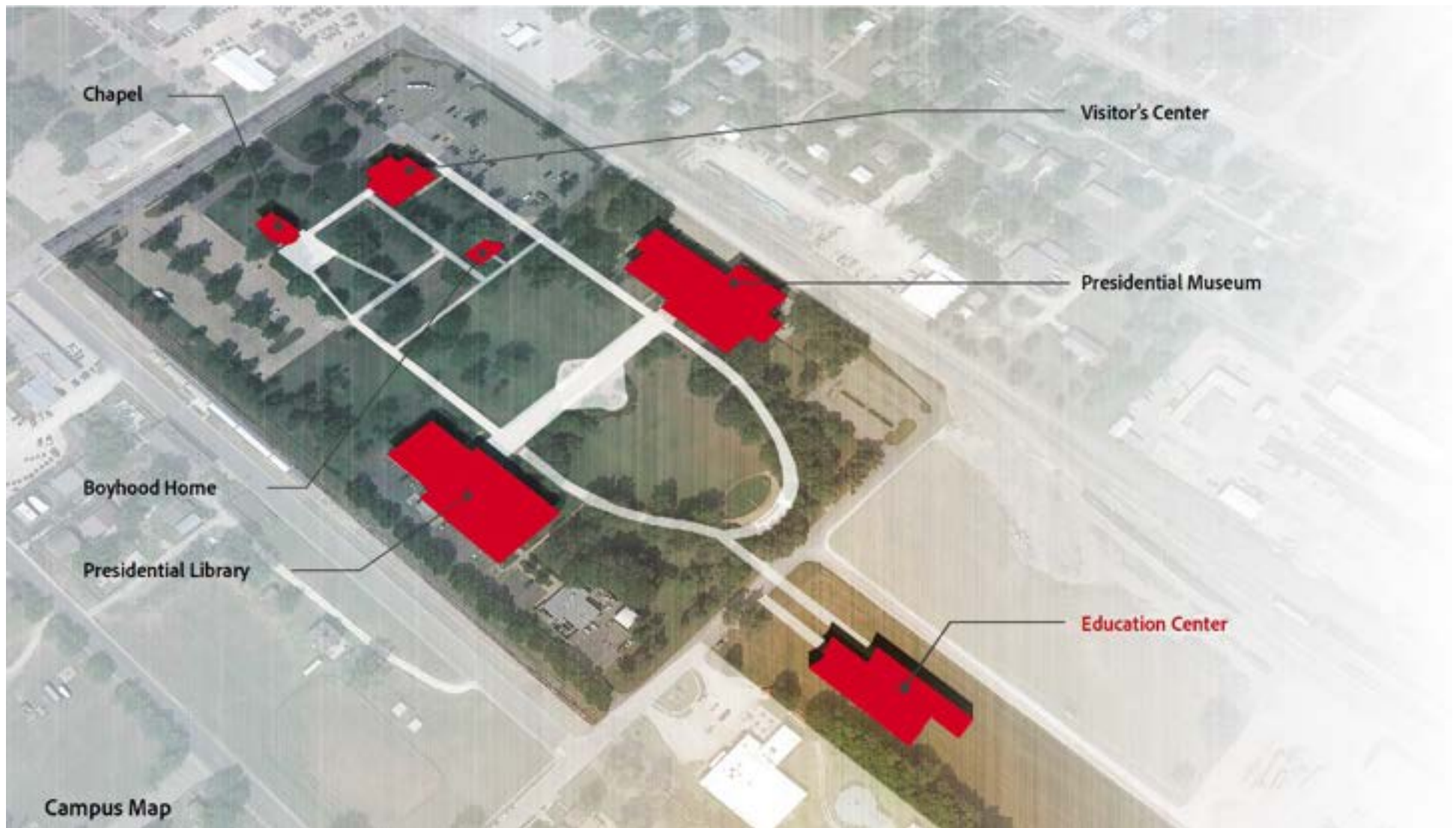
I LIKE IKE

A Campaign Championing Dwight D. Eisenhower's Lasting Legacy

Capital Project



Site Map





**“I come from the very heart
of America.”**

— Dwight D. Eisenhower

West entrance from campus

About the Eisenhower Foundation Education Center

The Eisenhower Foundation has completed the Schematic Design Phase of the Education Center, a multifunctional space that will be a learning environment and administration offices. Working with Multistudio, an architecture firm based in Kansas City, with guidance from construction experts, we have designed a new building that will ensure the work of the Foundation is doing to secure the legacy of Dwight D. Eisenhower extends beyond our physical borders. The exterior will invoke elements of the current Eisenhower Presidential Library campus while adding a modern flair.



Presidential Library



Native Prairie Bluestem



Building Section



Flint Hills Topography



Exterior Inspiration

The bluestem grass growing on the hills of Kansas today is the same that grew during Dwight D. Eisenhower's childhood. Bluestem emblazons the metalwork on the entrance to the Eisenhower Presidential Library, and the grass is used as inspiration to create an artistic sunshade on the new Education Center. Bluestem has a strong root system that grows deep — a symbol of Ike's deep roots to this place. While he grew to be a world leader on the international stage, Ike never forgot his roots and attributed his upbringing to much of his life's success.

The Education Center's roof echoes the rolling hills that beckoned Ike back to Abilene many times during the important milestones in his life and where he now lies. The many windows will provide Kansas sun to all of the building's interior spaces to create an open and bright environment.

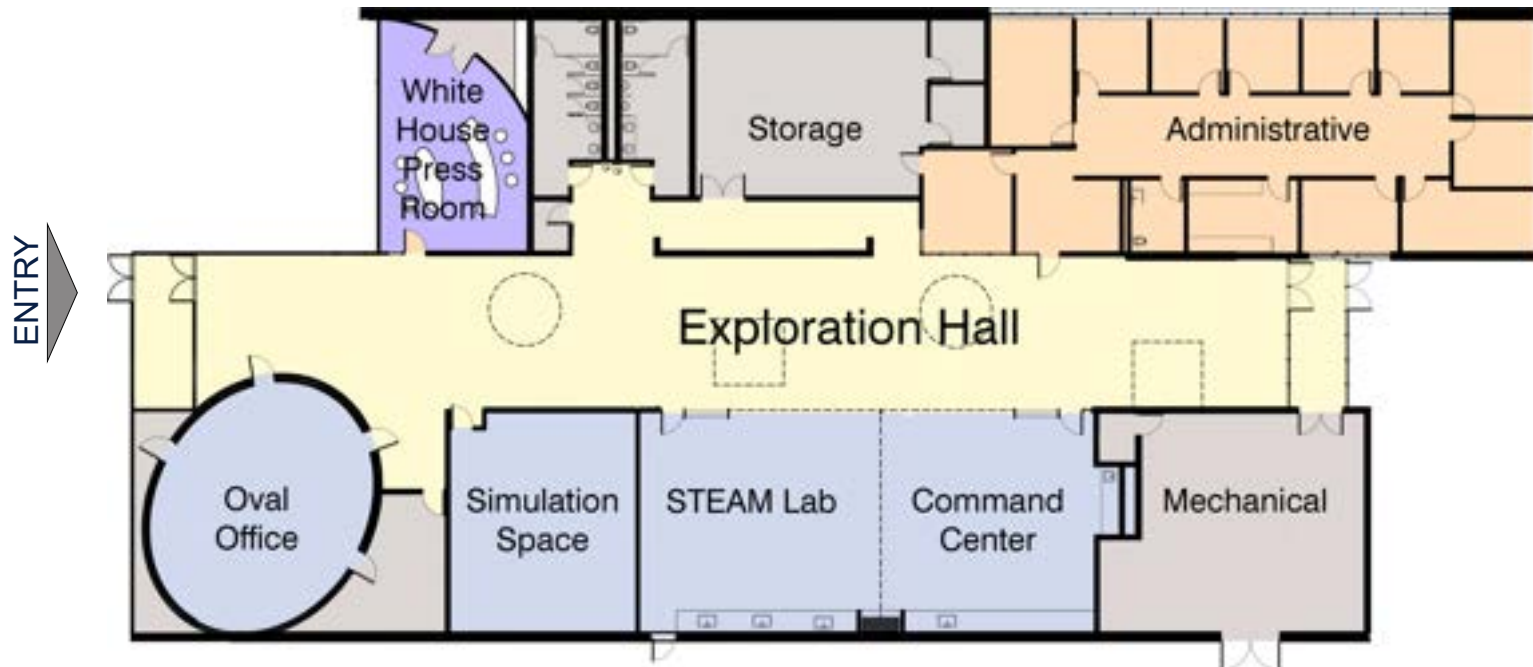
**“For history does not long
entrust the care of freedom
to the weak or the timid.”**

— Dwight D. Eisenhower



North side of building

Floor Plan



- Press Room
- Learning Spaces
- Administrative Offices
- Exploration / Circulation
- Support / Restroom



Building at night

Key Building Components

- **14,000 square feet**
- Four flexible learning spaces:
 - ➔ **Oval Office** replicates Eisenhower's office in the White House from 1953-1961
 - ➔ **STEAM Lab** (Science, Technology, Engineering, Art, & Math) provides space for scientific and artistic discovery
 - ➔ **Command Center** classroom converts into larger multi-use space for events and programs
 - ➔ **Simulation Space** includes full wall screens that digitally transform the room into any environment
- **White House Press Room** serves as the global headquarters for virtual programming and outreach
- **Exploration Hall** provides interactive experiences for visitors of all ages
- **Administrative Offices** lays out workspace for current and future staff



Oval Office

The **Oval Office** will recreate Ike's office in the White House. This full-sized replica will use props, digital screens, and other technologies to connect students onsite and online to the Executive Branch under Ike's eight years of peace and prosperity.



STEAM Lab (Science, Technology, Engineering, Art & Math)

The **STEAM Lab** will provide tools and encouragement for students to develop skills in science, technology, engineering, art, and math. From space to landscapes, it will celebrate Ike's commitment to scientific progress and the arts.



Command Center

The **Command Center** will feature a flexible space that can simulate the D-Day War Room as well as the White House Situation Room. Movable furniture and props, as well as digital screens and other technology will support a variety of onsite and online programs.



Combined Space

The **Command Center** and **STEAM Lab** will be able to combine into a larger space for events and programs.



Simulation Space

The **Simulation Space** will present an immersive learning experience. Using digitally created content and environments that replicate historic events, this space will transport learners from passive spectators to active participants.



White House Press Room

The **White House Press Room** will provide a dedicated space for virtual programs and will serve as the hub for broadcasting Ike's legacy beyond our state borders.

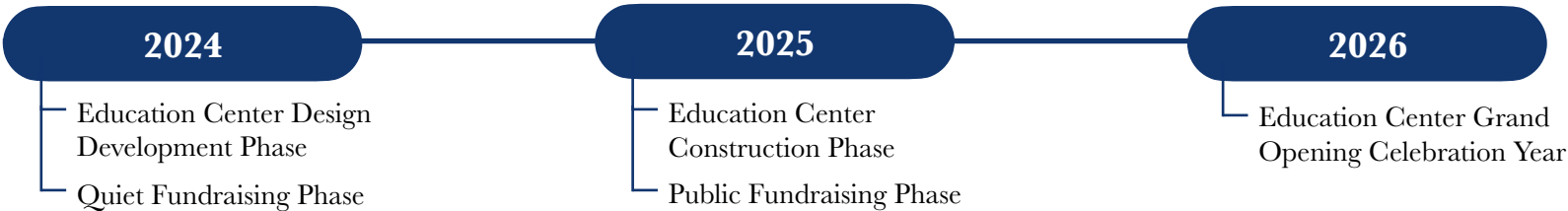


Exploration Hall

The **Exploration Hall** will welcome learners of all ages and will feature experiences that highlight pivotal moments in Dwight D. Eisenhower's impressive military and presidential career.

Project Timeline

Conceptualized in 2022, the Eisenhower Foundation’s Education Center project is ready to move into the Design Development Phase of the project. We anticipate opening the building in 2026 — the 250th anniversary of the United States of America.



Project Budget

The Eisenhower Foundation’s Education Building project is being conducted as part of a larger capital campaign, *I Like Ike: A Campaign Supporting Dwight D. Eisenhower’s Lasting Legacy*. Meeting the campaign goal by 2026 will enable the Eisenhower Foundation to secure Ike’s lasting legacy for decades to come.

NEED	GOAL
Capital Project <ul style="list-style-type: none">Features six learning spaces for onsite and online programs, including a studio dedicated to outreach.	\$14,000,000
Mission Support <ul style="list-style-type: none">Ongoing and future education programs, public programs, and general operations	\$1,000,000
Endowment <ul style="list-style-type: none">Increased support for core programs and the new building	\$2,000,000 — \$5,000,000
Total Campaign Goal	\$17,000,000 — \$20,000,000



200 SE 4th St. | P.O. Box 295

Abilene, KS 67410

785-263-6771

www.EisenhowerFoundation.net